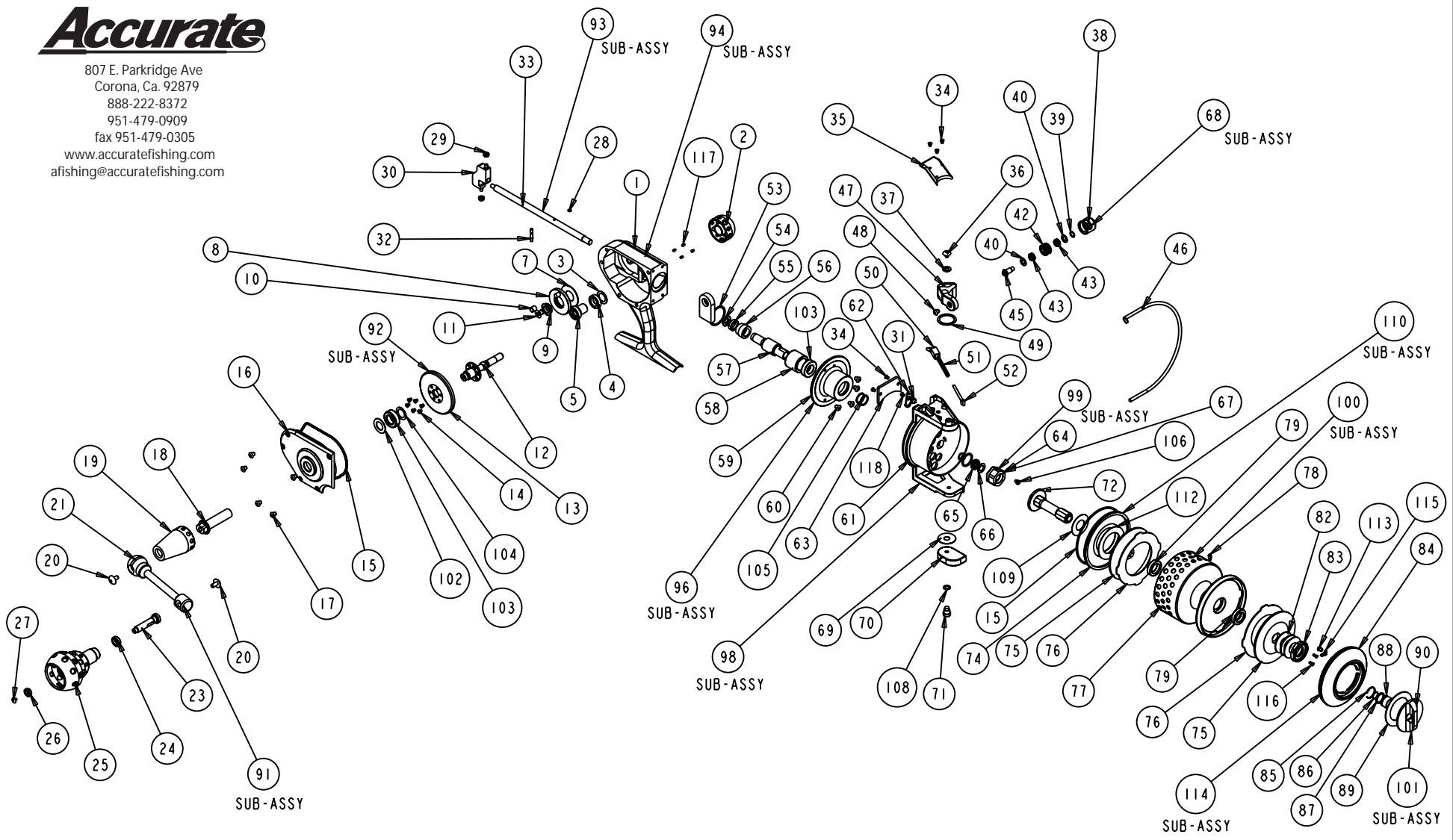


Accurate

807 E. Parkridge Ave
 Corona, Ca. 92879
 888-222-8372
 951-479-0909
 fax 951-479-0305
 www accuratefishing.com
 afishing@accuratefishing.com



PART NO.: **SR-12**

GENERAL TOLERANCES UNLESS NOTED UNFINISHED TO UNFINISHED SURFACE DIMENSIONS SHALL CONFORM ± .1 - .003 WHEN NOT SHOWN ANGLES ± .1 DEGREE .25 TO 1.5 INSIDE CORNER RADIUS .0350 MICROMILLIMETER FINISH ON MACHINED SURFACES		THIS DRAWING IS THE PROPERTY OF ACCURATE FISHING PRODUCTS LOS ANGELES, CA AND SHALL NOT BE REPRODUCED OR COPIED IN ANY MANNER WITHOUT THE WRITTEN PERMISSION OF AFP BE USED FOR ANY PURPOSE EXCEPT THE MANUFACTURE OF ARTICLES FOR ACCURATE FISHING PRODUCTS DRAWING TO BE RETURNED UPON REQUEST		DESCRIPTION: SR-30 TOTAL ASSM PART NAME: TOTAL ASSM DRAWN: DOUGLAS NILSEN DATE: 03-Jan-06 APPROVED: DATE: ORDER:		THIRD ANGLE PROJECTION PAT SHIP COMPUTER GENERATED		COPY APPR QA MFG ENG FTY ENG PAT SHIP	
[A] DATUM INDICATING SYMBOL ⊕ LOCATION ⊙ CONCENTRICITY ▭ FLATNESS		⊥ PERPENDICULARITY ∠ ANGULARITY ↗ RUNOUT (T. I. R.) ∥ PARALLELISM		Accurate Fishing Products Los Angeles, CA VENDOR: ADM MATL: WEIGHT: GGS: SCALE: 0.33 SHEET: 1 of 1		DRAWING: SPIN TOTAL ASSM SIZE: C			

SR-12 SPINNING REEL

No.	COMPONENT NAME	QTY	PART No.	No.	COMPONENT NAME	QTY	PART No.
1	SR-12 BODY	1	S-4548	59	SR-12 ROLLER CLUTCH HOUSING	1	S-4524
2	SR-12 HOOD OPPOSITE HANDLE SIDE COVER	1	S-4844	60	SR-12 CLUTCH HOUSING SCREWS	4	L-2016
3	SR-12 MAIN GEAR SHAFT RUBBER WASHER BODY SIDE	1	S-3004	61	SR-12 ROTOR	1	S-4752
4	SR-12 SMALL GEAR SHAFT BEARING	1	S-2996	62	SR-12 BAIL FLIPPER	1	S-4752
5	SR-12 GEAR SHAFT SMALL GEAR	1	S-3008	63	SR-12 BAIL COVER BOTTOM	1	S-4972
7	SR-12 BACK MAIN GEAR W/ PIN WASHER	1	S-2996	64	SR-12 ROTOR NUT	1	S-4634
8	SR-12 BACK GEAR W/ PIN	1	S-4716	65	SR-12 ROTOR NUT BEARING	1	S-3976
9	SR-12 BACK GEAR BEARING	1	S-3978	66	SR-12 NUT RUBBER WASHER	1	S-4640
10	SR-12 BACK GEAR SLIDE BUSHING	1	S-4626	67	SR NUT SCREW	2	S-4136
11	SR 12 BACK GEAR SCREW	1	S-4712	68	SR-12 BAIL FRAME SUB-ASSY	1	S-5112
12	SR-12 MAIN GEAR SHAFT	1	S-4032	69	SR-12 BAIL ARM WASHER NON-BEARING SIDE	1	S-3018
13	SR-12 MAIN GEAR	1	S-3918	70	SR-12 BAIL ARM STAINLESS STEEL SIDE	1	S-3058
14	SR-12 MAIN GEAR SHAFT ASSEMBLY SCREWS	6	S-4034	71	SR-12 BAIL ARM - STEEL SIDE - SHOULDER SCREW	1	S-4166
15	SR-12 SPOOL COVER / BODY COVER SEAL O-RING	2	S-2796	72	SR-12 DRAG SHAFT	1	S-4620
16	SR-12 BODY COVER	1	S-4550	74	SR-12 INSIDE SPOOL COVER	1	S-4530
17	SR-12 BODY COVER SCREWS	4	S-4036	75	SR-12 TITANIUM WASHER	2	S-4780
18	SR-12 HANDLE ARM DRIVE WASHER	1	S-4644	76	SR-12 FIBER DRAG WASHER	2	S-4780
19	SR-30 HANDLE SHAFT HOOD	1	S-4632	77	SR-12 SPOOL	1	S-3152
20	BOSS ATD HANDLE SCREW -LEFT HAND	2	B-1190	78	SR-12 BAIL FLIPPER SCREW	1	B-1296
21	SR-12 HANDLE ARM	1	S-4630	79	ATD 6 12 30 HANDLE SHAFT BEARING	2	L-1366
23	SR-12 HANDLE PIN	1	S-4646	82	SR-12 BELLEVILLE DISC SPRING WASHER	3	S-4180
24	POWER KNOB BEARING BIG	1	S-4288	83	SR-12 DRAG SHAFT NUT	1	S-4622
25	HALLOW POWER KNOB	1	S-4282	84	SR-12 SPOOL COVER	1	S-4580
26	POWER KNOB BEARING SMALL	1	S-4286	85	BOSS SIDEPLATE FRAME RETAINER	1	B-1052
27	POWER KNOB PIN SCREW	1	S-4266	86	SR-12 PRESET KNOB SCREW OD GROOVE O-RING	1	S-4122
28	SR-12 SPOOL SHAFT PIN O-RING	1	S-4714	87	SR-12 PRESET KNOB SCREW FACE O-RING	1	S-4126
29	SR-12 SLIDE BEARING	2	S-3968	88	SR-12 PRESET KNOB SCREW	1	S-4624
30	SR-12 INTERNAL Z SLIDE	1	S-4638	89	SR-12 PRESET RUBBER WASHER	1	S-4654
31	SR-12 BAIL FLIPPER SPRING	1	S-4948	90	SR-12 PRESET KNOB	1	S-4788
32	SR-12 SPOOL SHAFT PIN	1	S-4948	91	SR-12 HANDLE SUB-ASSY	1	S-4736
33	SR-12 SPOOL SHAFT	1	S-4528	92	SR-12 MAIN GEAR SUB-ASSY	1	S-4724
34	SR-12 ROTOR ARM COVER SCREWS	5	S-4028	93	SR-12 SPOOL SHAFT SUB-ASSY	1	S-4728
35	SR-12 ROTOR ARM COVER	1	S-4026	94	SR 12 BODY SUB	1	S-4720
36	SR ROTOR SCREW 8-32 X 3/16 T-10 TORX BUTTON SOCKET HEAD PASSIVATED	1	S-4132	96	SR-12 ROLLER CLUTCH HOUSING SUB-ASSY	1	S-4732
37	SR-12 BAIL ARM SCREW WASHER	1	S-3084	98	SR-12 ROTOR SUB-ASSY	1	S-4744
38	SR-12 BAIL FRAME	1	S-3750	99	SR-12 PINION NUT SUB ASSY, ROTOR NUT	1	S-4008
39	SR-12 BAIL ROLLER BEARING SPACER WASHER	1	S-3050	100	SR-12 SPOOL SUB-ASSY	1	S-4608
40	SR-12 BAIL ROLLER BEARING SEAL WASHER	2	S-3022	101	SR-12 PRESET KNOB SUB-ASSY	1	S-4758
42	SR-12 BAIL ROLLER	1	S-3048	102	SR-12 MAIN GEAR RUBBER WASHER COVER SIDE	1	S-3006
43	SR-12 BAIL ROLLER - BEARING	2	S-3970	103	SR-12 BODY COVER AND ROLLER CLUTCH HOUSING BEARING	2	S-3974
45	SR-12 BAIL ROLLER SHAFT	1	S-3890	104	SR-12 MAIN GEAR SHIM WASHER .010 THICK	1	S-4238
46	SR-12 STAINLESS STEEL BAIL WIRE	1	S-4754	104	SR-12 MAIN GEAR SHIM WASHER .005 THICK	1	S-4236
47	SR-12 BAIL ARM - ALUMINUM SIDE	1	S-4952	104	SR-12 MAIN GEAR SHIM WASHER .003 THICK	1	S-3090
48	SR BAIL FRAME SCREW 5-40 X 1/4	1	S-4130	105	SR-12 PINION GEAR SHAFT TO ROTOR WASHER	2	S-3096
49	SR-12 BAIL ARM WASHER BEARING SIDE	1	S-3020	106	BOSS HANDLE KEEPER SCREW 4-40 X 1/8	1	B-1800
50	SR ROTOR BAIL CANTER ARM	1	S-4748	108	SR-12 STEEL BAIL ARM SCREW WASHER	1	S-3082
51	SR-12 BAIL SPRING	1	S-4750	109	SR-12 DRAG SHAFT SHIM WASHER	2	S-3118
52	SR-12 BAIL LEVER CANTER PIN	1	S-4756	110	SR-12 INSIDE SPOOL COVER SUB-ASSY	1	S-3994
53	SR-12 BODY TO HOUSING CLUTCH SEAL WASHER	1	S-3104	112	SR-12 INSIDE SPOOL COVER RUBBER WASHER	1	S-3100
54	SR-12 BODY BEARING BUSHING	1	S-4652	113	SR-12 CLICKER SPRING SCREW	1	S-4324
55	SR-12 PINION SHAFT BEARING	1	S-3976	114	SR-12 SPOOL COVER SUB-ASSY	1	S-4782
56	SR-12 PINION GEAR	1	S-3910	115	SR-12 SPINNING REEL CLICKER SPRING	1	S-4290
57	SR-12 PINION GEAR SHAFT	1	S-4520	116	SR DRAG SHAFT NUT KEEPER SCREWS	2	S-1438
58	SR-12 ROLLER CLUTCH BEARING	1	S-3908	117	SR MAIN GEAR SHAFT POSITION ADJUSTMENT SCREWS	4	S-4790
				118	SR-12 HANDLE ARM TO DRIVE SHAFT SCREW	1	S-4982