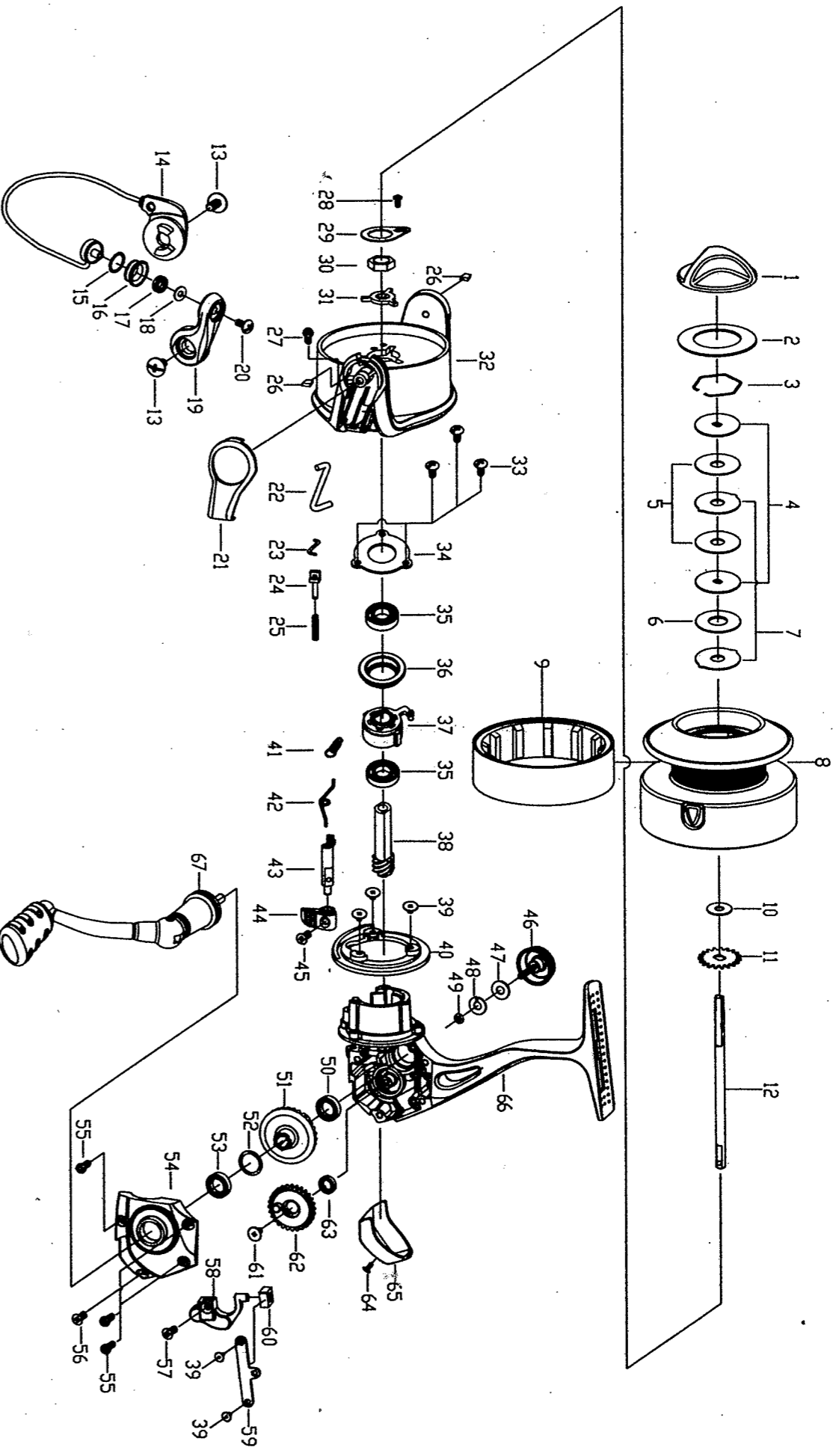


SANGER

Iron Claw

X-Stroke



NO. Parts name

- 1 DRAG KNOB ASSY
- 2 WASHER
- 3 RETAINER RING
- 4 KEY WASHER
- 5 WASHER
- 6 WASHER
- 7 EARED WASHER
- 8 SPOOL ALUM ASSY
- 9 RED ARBOR
- 10 CLICK GEAR WASHER
- 11 CLICK GEAR
- 12 MAIN SHAFT
- 13 SCREW
- 14 BALL ASSY
- 15 WASHER
- 16 LINE ROLLER
- 17 BALL BEARING
- 18 WASHER
- 19 BAIL ARM
- 20 SCREW
- 21 ROTOR COVER
- 22 KICK LEVER
- 23 BAIL LEVER
- 24 BAIL SPRING HOLDER
- 25 SPRING
- 26 WASHER
- 27 SCREW
- 28 SCREW
- 29 WASHER
- 30 NUT
- 31 ROTOR BRACE
- 32 ROTOR
- 33 SCREW
- 34 ROTOR BRACE
- 35 SCREW
- 36 BALL BEARING
- 37 ONE WAY CLUTCH BEARING
- 38 PINION GEAR
- 39 SCREW
- 40 RING
- 41 A/R SPRING
- 42 A/R SWITCH SPRING
- 43 A/R SWITCH-INTERIOR
- 44 A/R SWITCH-EXTERIOR
- 45 A/R SWITCH SCREW
- 46 HANDLE SCREW CAP
- 47 WASHER
- 48 WASHER
- 49 "O"RING
- 50 BALL BEARING
- 51 DRIVE GEAR
- 52 WASHER
- 53 BALL BEARING
- 54 BODY COVER
- 55 SCREW
- 56 SCREW
- 57 SCREW
- 58 SLIDER
- 59 SLIDER STRAP
- 60 SLIDER SHAFT BUSHING
- 61 SCREW
- 62 OSCILLATION GEAR
- 63 BUSHING
- 64 SCREW
- 65 REAR COVER
- 66 BODY
- 67 HANDLE ASSY

NO. Parts name

- 35 BALL BEARING
- 36 BALL BEARING HOLDER
- 37 ONE WAY CLUTCH BEARING
- 38 PINION GEAR
- 39 SCREW
- 40 RING
- 41 A/R SPRING
- 42 A/R SWITCH SPRING
- 43 A/R SWITCH-INTERIOR
- 44 A/R SWITCH-EXTERIOR
- 45 A/R SWITCH SCREW
- 46 HANDLE SCREW CAP
- 47 WASHER
- 48 WASHER
- 49 "O"RING
- 50 BALL BEARING
- 51 DRIVE GEAR
- 52 WASHER
- 53 BALL BEARING
- 54 BODY COVER
- 55 SCREW
- 56 SCREW
- 57 SCREW
- 58 SLIDER
- 59 SLIDER STRAP
- 60 SLIDER SHAFT BUSHING
- 61 SCREW
- 62 OSCILLATION GEAR
- 63 BUSHING
- 64 SCREW
- 65 REAR COVER
- 66 BODY
- 67 HANDLE ASSY