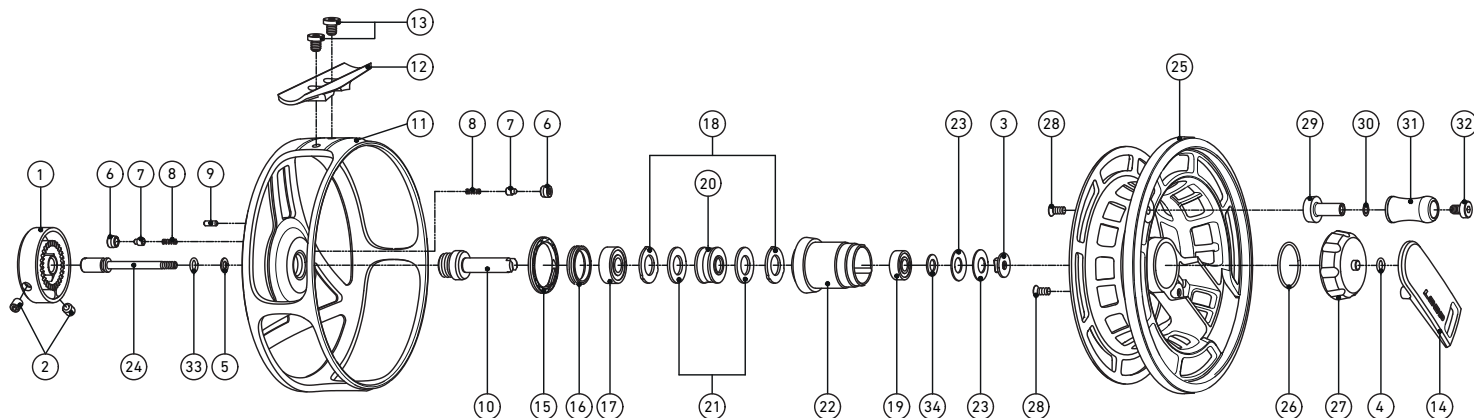


# LOOP Q REEL MANUAL MODEL 4/6 - 6/8 - 7/9



**THIS FLY REEL IS A QUALITY** product from the LOOP tackle assortment of fly fishing gear. The design, craftsmanship and testing behind this reel are all on the cutting edge of fly fishing product development. As a part of our commitment, our staff of anglers are constantly on the water designing, using, adjusting and perfecting the gear. We at LOOP are uniquely able to do this because our capabilities extend well beyond just manufacturing.

For more information about this fly reel and the complete line of LOOP tackle and gear, please visit us at [looptackle.com](http://looptackle.com).



- |                    |                          |                                    |                       |
|--------------------|--------------------------|------------------------------------|-----------------------|
| 1. Drag knob       | 11. Frame                | 21. Brake disc                     | 31. Handle knob       |
| 2. Locking screw   | 12. Foot                 | 22. Bearing holder                 | 32. Handle knob screw |
| 3. Draw nut        | 13. Foot screw           | 23. Spring washer                  | 33. O-ring            |
| 4. O-ring          | 14. Spool cover          | 24. Draw bar                       | 34. Bearing Washer    |
| 5. Draw bar washer | 15. Clicker plate        | 25. Spool                          |                       |
| 6. Clicker bush    | 16. Seal ring            | 26. O-ring                         |                       |
| 7. Clicker pin     | 17. Ball bearing         | 27. Spool cap                      |                       |
| 8. Clicker spring  | 18. Disc washer          | 28. Handle shaft/Spool cover screw |                       |
| 9. Stop pin        | 19. Ball bearing         | 29. Handle shaft                   |                       |
| 10. Main shaft     | 20. One way clutch ass'y | 30. Handle knob washer             |                       |

## MAINTENANCE OF THE REEL:

- This reel is constructed so that maintenance is kept to a minimum. However, be sure to check on the level of grease on the O-ring (26) inside the spool cap (27), after using the reel for some time. We recommend Molykote 111C grease or similar.
- Put grease on locking screws #2 and the threads on drag knob #1 before use in saltwater.
- Rinse reel after use in saltwater. Do not remove the spool, water may penetrate the drag system.
- After fishing or when stored, make sure to release the pressure on the drag system.

**CAUTION!** Do not touch any moving parts of the reel when a fish is running.

## CONVERSION LEFT/RIGHT HAND RETRIEVE:

1. Rotate spoolcap (27) anticlockwise to release spool
2. Pull spool (25) straight out
3. Release stopscrews (2) ½ turn with enclosed Allen wrench
4. Pull drag knob (1) straight out
5. Rotate draw bar (24) anticlockwise with flat screwdriver and remove draw bar nut (3)
6. Pull bearing holder (22), with internal, straight out
7. Remove and turn the clicker plate (15)
8. Remove seal ring (16)
9. Remove cup springs (23), bearing (17), disc washer (18), carbon brake disc (21) and one way clutch assy (20)
10. Turn one way clutch assy (20)
11. Wipe clean
12. Assemble the reverse way

# LOOP Q REEL MANUAL MODEL 8/11



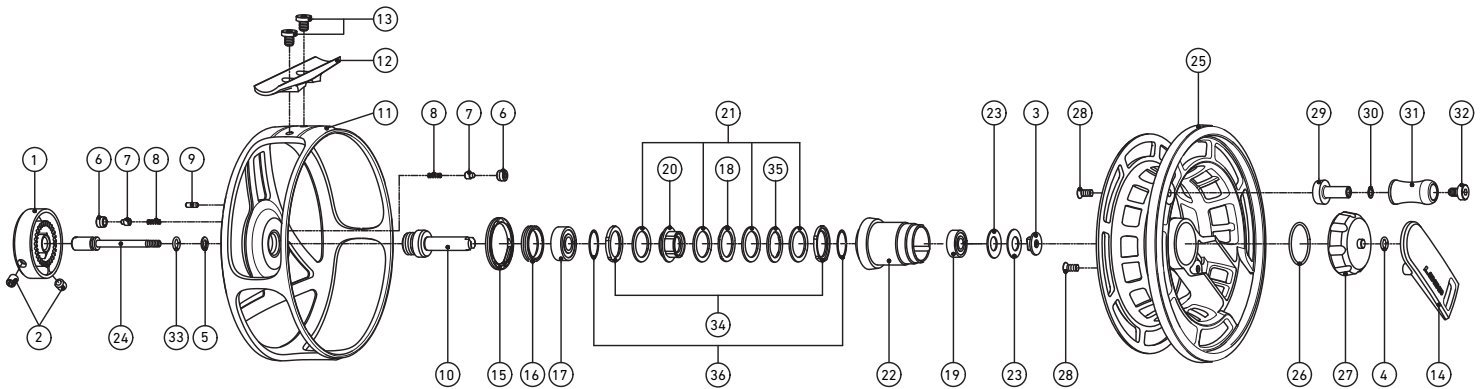
**THIS FLY REEL IS A QUALITY** product from the LOOP tackle assortment of fly fishing gear. The design, craftsmanship and testing behind this reel are all on the cutting edge of fly fishing product development. As a part of our commitment, our staff of anglers are constantly on the water designing, using, adjusting and perfecting the gear. We at LOOP are uniquely able to do this because our capabilities extend well beyond just manufacturing.

For more information about this fly reel and the complete line of LOOP tackle and gear, please visit us at [looptackle.com](http://looptackle.com).

## MAINTENANCE OF THE REEL:

- This reel is constructed so that maintenance is kept to a minimum. However, be sure to check on the level of grease on the O-ring (26) inside the spool cap (27), after using the reel for some time. We recommend Molykote 111C grease or similar.
- Put grease on locking screws #2 and the threads on drag knob #1 before use in saltwater.
- Rinse reel after use in saltwater. Do not remove the spool, water may penetrate the drag system.
- After fishing or when stored, make sure to release the pressure on the drag system.

**CAUTION!** Do not touch any moving parts of the reel when a fish is running.



- |                    |                         |                                     |                       |
|--------------------|-------------------------|-------------------------------------|-----------------------|
| 1. Drag knob       | 11. Frame               | 21. Brake disc                      | 31. Handle knob       |
| 2. Locking screw   | 12. Foot                | 22. Bearing holder                  | 32. Handle knob screw |
| 3. Draw nut        | 13. Foot screw          | 23. Spring washer                   | 33. O-ring            |
| 4. O-ring          | 14. Spool cover         | 24. Draw bar                        | 34. Disc washer outer |
| 5. Draw bar washer | 15. Clicker plate       | 25. Spool                           | 35. Disc washer inner |
| 6. Clicker bush    | 16. Seal ring           | 26. O-ring                          | 36. C-clip            |
| 7. Clicker pin     | 17. Ball bearing        | 27. Spool cap                       |                       |
| 8. Clicker spring  | 18. Disc washer         | 28. Handle shaft, Spool cover screw |                       |
| 9. Stop pin        | 19. Ball bearing        | 29. Handle shaft                    |                       |
| 10. Main shaft     | 20. One way clutch assy | 30. Handle knob washer              |                       |

## CONVERSION LEFT/RIGHT HAND RETRIEVE:

1. Rotate spoolcap (27) anticlockwise to release spool
2. Pull spool (25) straight out
3. Release stopscrews (2) ½ turn with enclosed Allen wrench
4. Pull drag knob (1) straight out
5. Rotate draw bar(24) anticlockwise with flat screwdriver and remove draw bar nut (3)
6. Pull bearing holder (22), with internal, straight out
7. Remove and turn the clicker plate (15)
8. Remove seal ring (16).
9. Remove cup springs (23), bearing (17), disc washer (18), carbon brake disc (21) and one way clutch assy (20)
10. Turn one way clutch assy (20)
11. Wipe clean
12. Assemble the reverse way