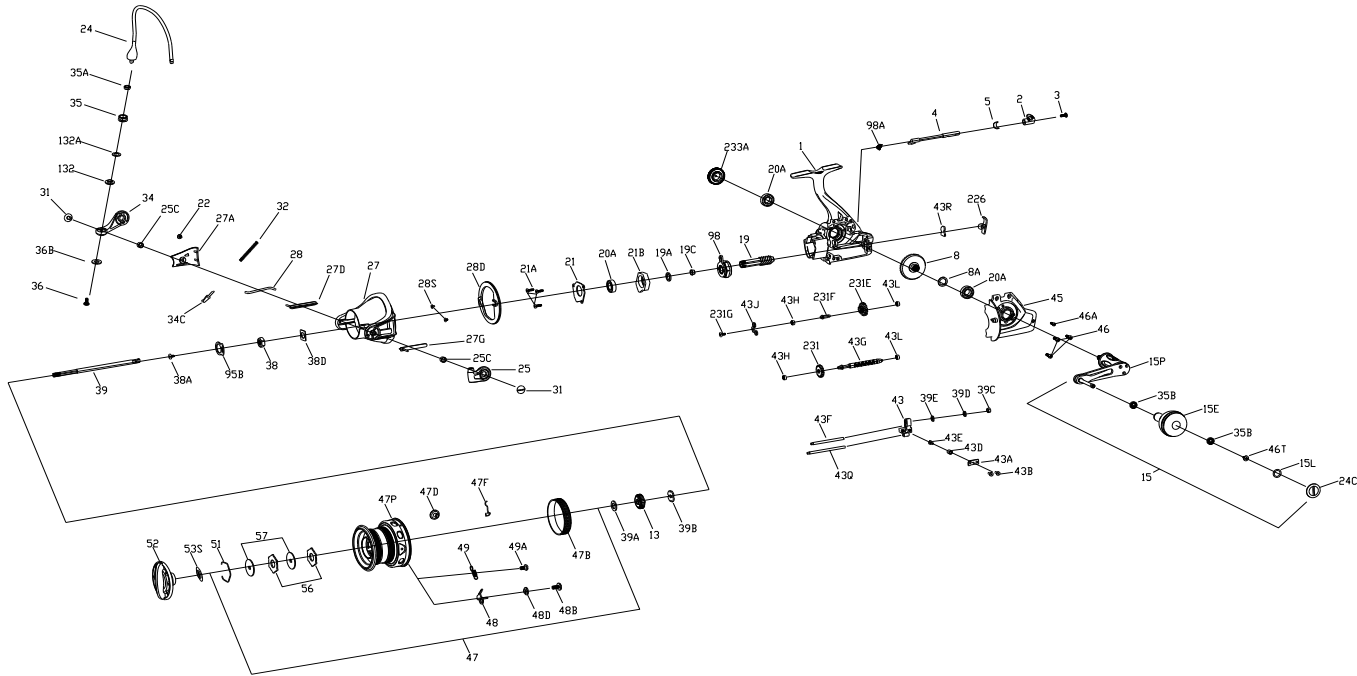




PARTS LIST FOR CFTII5000LC-US/CFTII5000LC-EU/CFTII6000LC-US/CFTII6000LC-EU



EY NO.	PART NO.	PENN STYLE NO.	DESCRIPTION
35B	1377606	35A-BTLI8000LC	Ball Bearing
36	1277166	36-SSV7500	Line Roller Screw
36B	1417809	36B-CLA6000	Bail Arm Screw Washer
38	1483142	38-CFTII5000LC	Rotor Nut
38A	1385554	38A-CLA2000	Screw
38D	1447916	38D-CFTII5000	Washer
39	1483143	39-CFTII5000LC-US	Main Shaft
39	1483144	39-CFTII5000LC-EU	Main Shaft
39	1483145	39-CFTII6000LC-US	Main Shaft
39	1483146	39-CFTII6000LC-EU	Main Shaft
39A	1483099	39A-CFTII4000LC	Spool Adjust Washer
39B	1483100	39B-CFTII4000LC	Main Shaft Washer
39C	1259637	39C-7000AF	Main Shaft Nut
39D	1483147	39D-CFTII5000LC	Rubber pad
39E	1483148	39E-CFTII5000LC	Fixing plate
43	1483149	43-CFTII5000LC	Worm O/S Slider
43A	1259635	43A-7000AF	Slider Retainer Plate
43B	1276992	14-SSV6500LL	Screw
43D	1122193	43D-7000AF	Guide Claw Bushing
43E	1122192	43E-7000AF	Guide Claw
43F	1483150	43F-CFTII5000LC	Guide Shaft
43G	1483152	43G-CFTII5000LC	Worm Shaft
43G	1483153	43G-CFTII6000LC	Worm Shaft
43H	1377609	43H-BTLI8000LC	Ball Bearing
43J	1483154	43J-CFTII5000LC	Top Retainer Plate
43Q	1483151	43Q-CFTII5000LC	Guide Shaft
43R	1483155	43R-CFTII5000LC	Rear Retainer Plate
43L	1341533	43L-SSV7500LC	Bushing
45	1483156	45-CFTII5000LC	Body Cover
45	1483157	45-CFTII6000LC	Body Cover
46	1377611	46-BTLI8000LC	Screw
46A	1447884	46-CFTII3000	Screw
46T	1341500	3-SSV7500LC	Screw
47	1483158	47-CFTII5000LC-US	Spool Assembly
47	1483159	47-CFTII5000LC-EU	Spool Assembly
47	1483160	47-CFTII6000LC-US	Spool Assembly
47	1483161	47-CFTII6000LC-EU	Spool Assembly
47B	1483162	47B-CFTII5000LC	Spool Band
47D	1483163	47D-CFTII5000LC	Line Hook
47D	1483213	47D-CFTII8000LC	Line Hook
47F	1483164	47F-CFTII5000LC	Retainer
47P	1483165	47P-CFTII5000LC-US	Spool
47P	1511935	47P-CFTII5000LC-EU	Spool
47P	1483166	47P-CFTII6000LC-US	Spool
47P	1511936	47P-CFTII6000LC-EU	Spool
48	1483167	48-CFTII5000LC	Click Plate
48B	1385581	48B-CLA3000	Spool Clicker Spring Screw
48D	1341546	48D-SSV7500LC	Spool Clicker Spacer Ring
49	1259579	49-7000AF	Spool Clicker Spring
49A	1341547	49A-SSV7500LC	Spool Clicker Spring Screw
51	1447925	51-CFTII5000	5000 Drag Washer Retainer
51	1378418	51-BTLI7000LC	6000 Drag Washer Retainer
52	1483168	52-CFTII5000LC-US	Drag Knob Assembly
52	1483169	52-CFTII5000LC-EU	Drag Knob Assembly
52	1483170	52-CFTII6000LC-US	Drag Knob Assembly
52	1483171	52-CFTII6000LC-EU	Drag Knob Assembly
53S	1447927	53S-CFTII5000	5000 Drag Knob Seal
53S	1483237	53S-CFTII8000LC	6000 Drag Knob Seal
56	1339557	56-CLA5000	5000 Drag Friction Washer
56	1341550	56-SSV7500LC	6000 Drag Friction Washer
57	1483172	57-CFTII5000LC	Washer
57	1378421	57-BTLI7000LC	Washer
95B	1277093	95B-SSV5500	Rotor Nut Locking Plate
98	1111483	98-CFTII5000LC	One Way Clutch Assembly
98A	1378449	98A-BTLI8000LC	Clutch Assembly Spring
132	1483173	132-CFTII5000LC	Collar
132A	1277097	132A-SSV5500	Line Roller Washer
226	1483174	226-CFTII5000LC	Rear Cover
231	1483175	231-CFTII5000LC	Gear
231E	1483176	231E-CFTII5000LC	Gear
231F	1483177	231F-CFTII5000LC	Pin
231G	1122123	231G-CFTII5000LC	Screw
233A	1339570	233A-CLA5000	Handle Cap Assembly

KEY NO.	PART NO.	PENN STYLE NO.	DESCRIPTION
1	1483118	1-CFTII5000LC-US	Body Assembly
1	1483119	1-CFTII5000LC-EU	Body Assembly
1	1483120	1-CFTII6000LC-US	Body Assembly
1	1483121	1-CFTII6000LC-EU	Body Assembly
2	1341498	2-SSV7500LC	A/R Button
3	1341500	3-SSV7500LC	Screw
4	1483122	4-CFTII5000LC	A/R Lever
5	1483123	5-CFTII5000LC	A/R Spring
8	1483124	8-CFTII5000LC	Drive Gear
8A	1277037	8A-SSV5500	Drive Gear Shim Washer
13	1483048	13-CFTII4000LC	Click Gear
15	1483125	15-CFTII5000LC	Handle Assembly
15E	1417807	15E-CLA5000	Handle Knob
15L	1417804	15L-CLA2000	Handle Knob Seal
15P	1483126	15P-CFTII5000LC	Sub-Handle Assembly
19	1483127	19-CFTII5000LC	Gear
19A	1483128	19A-CFTII5000LC	Washer
19C	1339492	19C-CLA 5000	Pinion Gear Bushing
20A	1308090	20-CFT5000	Ball Bearing
21	1483129	21-CFTII5000LC	Retainer
21A	1377594	21A-BTLI8000LC	Screw
21B	1483130	21B-CFTII5000LC	Collar

KEY NO.	PART NO.	PENN STYLE NO.	DESCRIPTION
22	1092845	22-CLA2000	Screw
24	1483131	24-CFTII5000LC	One Piece Bail
24	1483132	24-CFTII6000LC	One Piece Bail
24C	1417808	24C-CLA5000	Handle Knob Cap
25	1339500	25-CLA5000	Bail Holder
25C	1102065	25C-CLA5000	Bushing
27	1483133	27-CFTII5000LC	Rotor
27	1483134	27-CFTII6000LC	Rotor
27A	1483135	27A-CFTII5000LC	Rotor Cover
27A	1483136	27A-CFTII6000LC	Rotor Cover
27D	1483137	27D-CFTII5000LC	Line Guard
27G	1483138	27G-CFTII5000LC	Line Guard
28	1483139	28-CFTII5000LC	Rotor Trip Lever
28	1483140	28-CFTII6000LC	Rotor Trip Lever
28D	1483141	28D-CFTII5000LC	Rotor Brake
28S	1377602	28S-BTLI8000LC	Screw
31	1339513	31-CLA5000	Screw
32	1277162	32-SSV7500	Bail Spring
34	1389468	34-CLA6000	Bail Arm
34C	1389469	34C-CLA6000	Pivot Arm
35	1447878	35-CFTII3000	Line Roller
35A	1418992	35A-SLA3500	Line Roller Bushing

407-CFTII5000LC-6000LC Rev.01 28-11-2018  
 1481283--CFTII5000LC-US  
 1481284--CFTII5000LC-EU  
 1481285--CFTII6000LC-US  
 1481286--CFTII6000LC-EU

